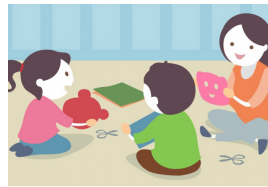


The UnivPark.org Website

SHARING NEWS, ACTIONS, ACTIVITIES



NEIGHBORHOOD DISASTER PREPARE SAFETY IS ON US



COMMUNITY ART IDEAS & ACTIVITIES SHARE - HAVE FUN



NEIGHBOR HELPING NEIGHBOR UNIVERSITY PARK

UNIVPARK NEWS

Disaster Preparedness

We are all experiencing first hand the significant impact of the global coronavirus pandemic. This makes the impact of a disaster a lot clearer and it hits closer to home that disasters happen. Here, earthquakes are just one of a few potential disasters than can strike at any time. You and your fellow neighbors can act now so that we are all better prepared for such an event.



Working with MPC ready.org, an effort to help neighborhoods in Menlo Park and unincorporated San Mateo County prepare for any coming disaster, be it earthquake, chemical/gas accident, or other similar catastrophe. Preparing a plan is key to protecting your life and loved ones. Family members should know what to do before, during and after the disaster, which medical supplies are essential, know how to get and be safe. These are all aspects of household and neighborhood preparedness. Now is the time to prepare, before disaster strikes.

Our neighborhood website (UnivPark.org/prepare) can help you and all of our neighborhood prepare. You will find family check lists, information and guidance. Part of this effort to help in the safety of you, your family, your pets, and your home is to [register on the Disaster Preparedness neighborhood form](#). This information will help CERT and Emergency Responders have the information needed to more effectively respond and provide care and during a disaster.

4th of July - Safe Block Party



Many years ago, as some will remember, our neighborhood tradition of a 4th of July party was going strong. We hope we can re-establish old connections and make new ones by safely throwing a Shelter In Place Fourth of July Party. Please read the UnivPark.org/block-party webpage for the concept and details. Use social distancing and use your face mask when needed.

If you don't have access to the Internet and want to be included in neighborhood actions and news, contact Ron Snow at 650.949.6658

Palo Alto Way Crosswalk

One takeaway from the recent social action is that our being quiet and doing nothing, can be part of the problem. Applying that lesson to the continued lack of County action to make Palo Alto Way's crosswalk safer, it is time to make our voices heard to County and get the much needed and long overdue safety improvements implemented. [UnivPark.org/safe/crosswalk](https://univpark.org/safe/crosswalk) is our webpage for taking action. Where you can easily:

- Voice your support for safety action to County officials
- Become a member of the Crosswalk Safety Action Group
- Complete a quick Crosswalk Poll and Online Petition

[UnivPark.org/safe/crosswalk](https://univpark.org/safe/crosswalk) Check it out, participate, leave feedback in the comments.

Traffic Safety - Road Design

Back on January 30th, there was a County-Community meeting on Santa Cruz/Alameda Corridor Safety. Subsequently, a questionnaire was distributed and results are that our community and corridor commuters are in favor of finally taking action to make the corridor safer and remove the 'expressway feel' that we currently have.

One major outstanding issue is the road design at the "Y" intersection of Alameda and Santa Cruz. County is planning on keeping basically the same (problematic and dangerous) design as we have currently: 50 mph designed turn, long angled crosswalks, no safety provision for residents living at the Y, excessively wide intersection, same problematic and confusing traffic lights, etc. County can do better! and, we should ask them to. County has the recommendations from traffic safety engineers that identify safety changes, a new design, and one that puts pedestrians and cyclists safety at the top of the list. They should listen and adopt a safer design!

Many of the persons that submitted the questionnaire took time to identify, by write-in comments, that our community's "Y" intersection design known as #10.5 is their favored design. This community design is based on safety engineering recommendations and Federal Highway guidelines. The 10.5 design evolved after input from neighbors, cyclists, area officials, and traffic engineers. It addresses all of the safety issues our community identified and it has crosswalks that are 66% shorter, a much narrower (aka smaller) intersection, solves the major safety issues for residents at the Y, and is a much simpler, uncomplicated, and calmer intersection. Yet County is refusing to take action on this safer design and choosing to ignore key safety considerations.

Please review the safety issues at the "Y" and pros/cons of the designs for the Y. All are available at our community website: [UnivPark.org/safe/y](https://univpark.org/safe/y) and the [UnivPark.org/safe/y/pro-con](https://univpark.org/safe/y/pro-con). Check it out, participate, weight in and leave feedback in the comments.

Support our Local
Businesses



Local businesses can use our help. We first featured Luttickens and we plan on also featuring Cerritos Mexican, Woodside Bakery, Shady Lane, all in Sharon Heights. Lets support local business via online sales and takeout orders. 👍